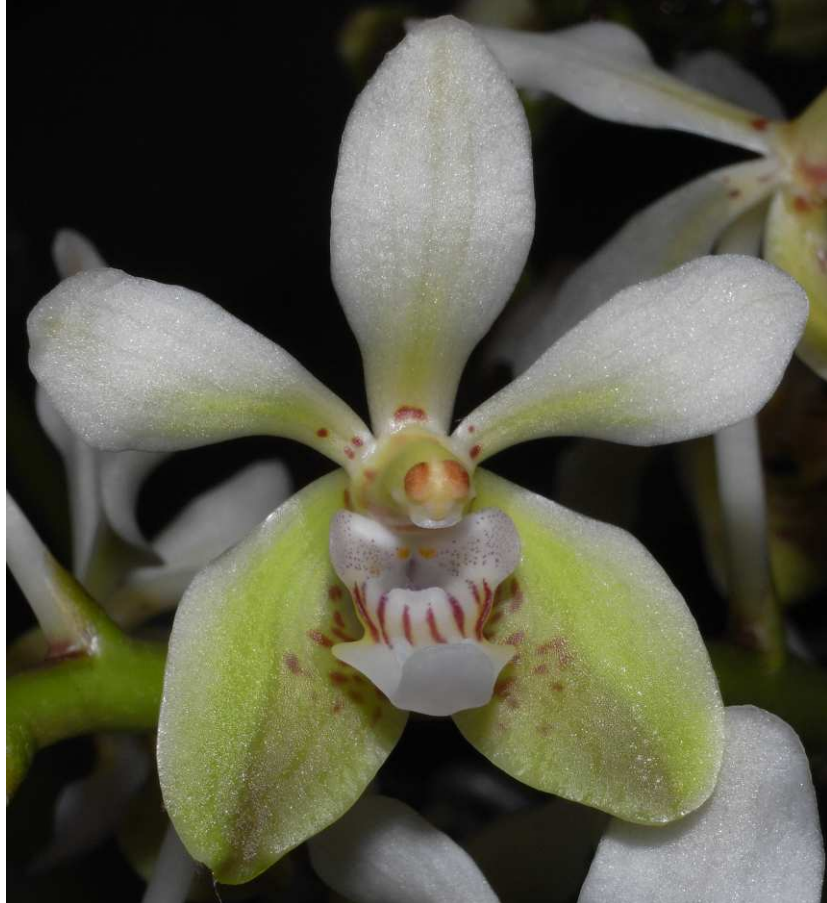


# Selected Species from NMQOC Species Appreciation Group 17<sup>th</sup> July 2010

Photos courtesy of Graham Corbin  
Orchid commentary courtesy of Roger Finn, Nev Bone

*Vanda lamellata*  
var. *debustan*



*Pelatantheria*  
*insectifera*

*Cattleya percivaliana*  
'Summits' x 'Alberts'



*Cattleya percivaliana*

- Venezuela
- lithophyte; grows in full sun near rivers at altitudes from 1300m to 1900m.
- I grow this plant in a bark medium in a pot under 50% shade.

*Barkeria whartonia*

- lithophyte
- Low Altitude
- Southern Mexico. Growing in exposed conditions at low altitude in deciduous forests





*Dendrobium tetragonum*

- epiphyte
- Low to moderate altitude
- Rain forest trees around the Cathu area just north of Rockhampton.
- Has the distinctive green form with the marone margins, typical of the area.

*Laelia anceps*



*Paphiopedilum venustum*

*Phaius aff. tankervilleae* (PNG)

*Phaius tankervilleae* is a widespread orchid found from S.E. Asia through P.N.G. and Australia to the Pacific Islands. In P.N.G. it grows in swampy areas from sea level to 1000m; from semi-shade to full sun. I grow it in coconut fibre and it is watered daily.



*Epidendrum stamfordianum*



*Dendrochilum aff. tenellum*

- epiphyte
- 1000 to 1500m
- Endemic to Philippines.
- Growing in mossy forests on the trunks and branches in filtered light situations. It is the only species of the genus to have perfectly terete leaves.





*Dendrochilum wenzelii*



*Dendrochilum wenzelii* 'Yellow'

- epiphyte
- 501 - 1800m
- Philippines.
- Growing in mountain forests on the trunks and outer branches in filtered light.



*Dendrochilum tenellum*

- epiphyte
- 1000 to 1500m
- Endemic to Philippines.
- Growing in mossy forests on the trunks and branches in filtered light situations. It is the only species of the genus to have perfectly terete leaves.



*Scaphyglottis prolifera*

- epiphyte
- Low to moderate altitude
- Probably from the central Americas, Brazil



*Mediocalcar decoratum*

- epiphyte
- 900 to 2500m
- New Guinea rain forests
- colour of flowers can vary



*Dendrobium erectifolium*