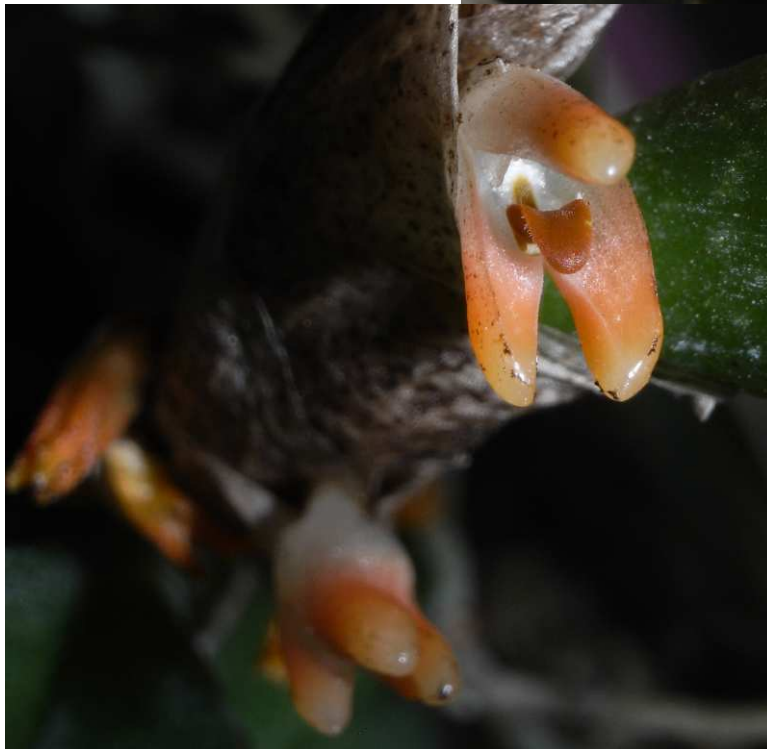
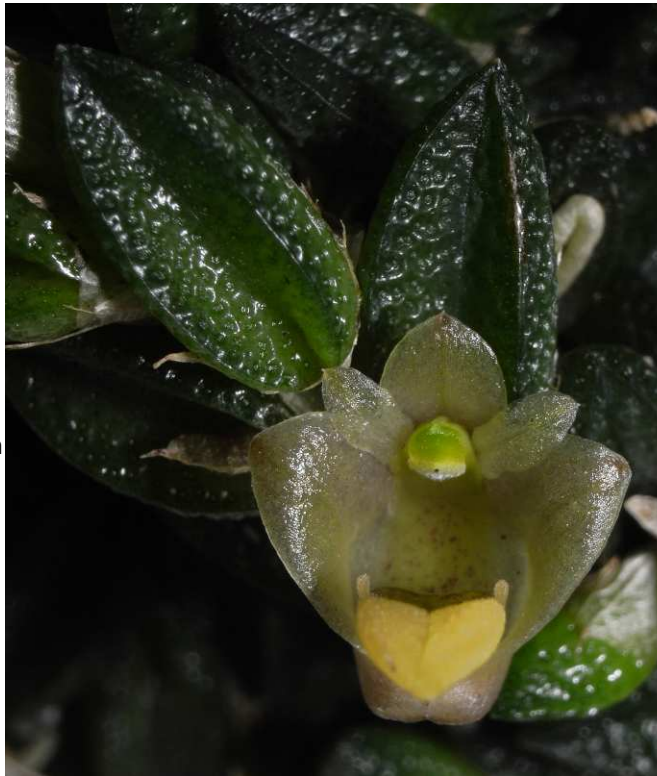


Selected Species from NMQOC Species Appreciation Group 26th June 2011

Photos courtesy of Graham Corbin
Orchid commentary courtesy of Nev Bone, Roger & Dorothy Finn

Dendrobium toressae

- epiphyte, lithophyte
- Low to moderate
- Northeast Qld
- Grows in rain forests & open forests on the trunks of trees or on rocks
- high to low light levels



*Bulbophyllum
schillerianum*

Dockrillia rigida



*Brassavola
cordata*

*Cattleya
percivaliana*





Cattleya forbesii



Brassavola nodosa



Cattleya maxima

Epidendrum coriifolium



Dendrobium aberrans

Pelatantheria insectifera

- epiphyte, lithophyte or terrestrial
- 200 to 1000m
- Assam, Bangladesh, Eastern Himalyas, India, Western Himalyas, Andaman Islands, Thailand, Burma & Vietnam.
- Grows in semi shaded locations on rocks or bushes.





Liparis latifolia

- epiphyte
- 200 to 1700m
- China, Indonesia, Malaysia, New Guinea, Philippines & Thailand.
- Grows in shady locations near the forest floor close to streams & rivers.

Neolehmannia porpax

- epiphyte
- up to 2000m
- Mexico, Panama, Venezuela & Peru.
- Growing in pine & oak forests, it will tolerate a variety of conditions from dry to moist.



Gongora odoratissima

- epiphyte
- low
- Venezuela, Tolima & Colombia.



Dendrochilum aff. *convallariiforme* 'Yellow'

Dendrochilum convallariiforme 'Yellow'

- epiphyte, lithophyte
- 300 to 1900m
- Endemic to Philippines.
- Growing in mossy forests on the trunks and branches in filtered light situations.



Cattleya percivaliana



Dendrochilum formosanum

- Epiphyte
- grows in exposed situations in the rainforest's



Dendrochilum convallariiforme
var. *convallariiforme*

- lithophyte
- 300 to 1900m
- Endemic to the Philippines
- grows in moist rain forest

Spathoglottis sp. New Guinea





Coelogyne speciosa

- epiphyte
- 700 - 2000m
- Islands of Malay Archipelago rain forest. Growing on the trunk & major limbs where it receives filtered light.

Encyclia cochleata

- From Florida and West Indies thru Mexico to Columbia and Venezuela
- Grows in dense tropical forests from sea level to 2000 meters
- The inflorescence grows to about 20 inches and it flowers throughout the year.
- Even watering thru year
- Cockleshell Orchid



Doritis pulcherrima



Cattleya maxima



Dendrochilum bigibbosum

Dendrobium bigibbum
(‘Blue Horizon’ x ‘Blue’)
x ‘Blue Coral’

